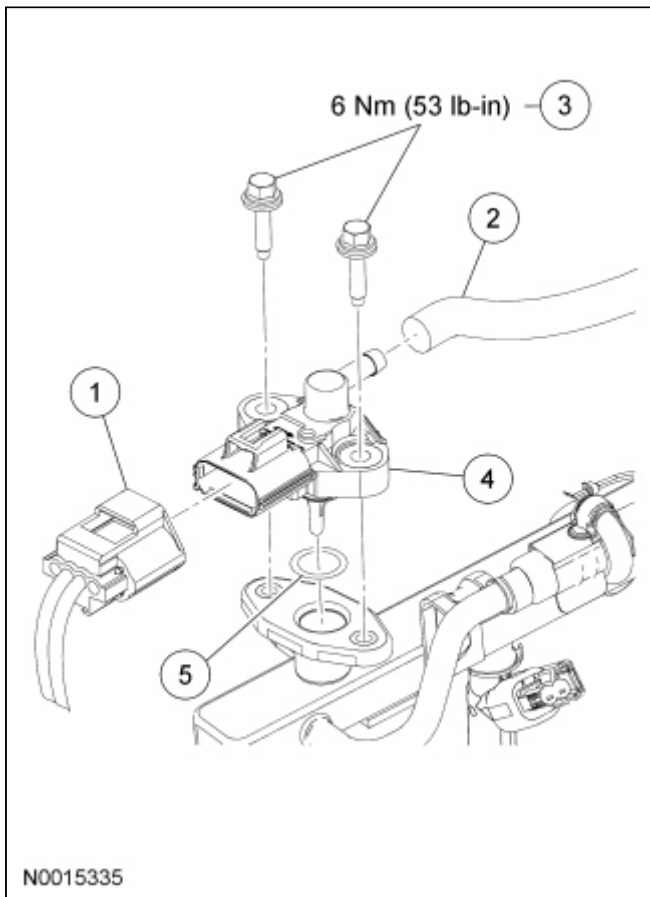


## Fuel Rail Pressure and Temperature Sensor — 4.6L (3V), 5.4L (4V)

### Material

Item	Specification
Motorcraft SAE 5W-30 Premium Synthetic Blend Motor Oil XO-5W30-QSP (US); Motorcraft SAE 5W-30 Super Premium Motor Oil CXO-5W30-LSP12 (Canada); or equivalent	WSS-M2C929-A
Motorcraft SAE 5W-50 Full Synthetic Motor Oil XO-5W50-QGT or equivalent	WSS-M2C931-B

**NOTE:** 4.6L (3V) shown, 5.4L (4V) similar.



Item	Part Number	Description
1	14A464	Fuel rail pressure and temperature sensor electrical connector
2	9C482/9E498	Vacuum hose (4.6L [3V]/ 5.4L [4V])
3	W705870	Fuel rail pressure and temperature sensor bolts (2 required)
4	9G756	Fuel rail pressure and temperature sensor
5	—	O-ring seal

## Removal and Installation



**WARNING:** Do not smoke, carry lighted tobacco or have an open flame of any type when working on or near any fuel-related component. Highly flammable mixtures are always present and may be ignited. Failure to follow these instructions may result in serious personal injury.



**WARNING:** Before working on or disconnecting any of the fuel tubes or fuel system components, relieve the fuel system pressure to prevent accidental spraying of fuel. Fuel in the fuel system remains under high pressure, even when the engine is not running. Failure to follow this instruction may result in serious personal injury.

1. Release the fuel system pressure. For additional information, refer to [Section 310-00](#).
  2. Disconnect the battery ground cable. For additional information, refer to [Section 414-01](#).
  3. Disconnect the fuel rail pressure and temperature sensor electrical connector.
  4. Disconnect the vacuum hose from the fuel rail pressure and temperature sensor.
  5. Remove the 2 bolts and the fuel rail pressure and temperature sensor.
    - To install, tighten to 6 Nm (53 lb-in).
  6. To install, reverse the removal procedure.
    - Inspect the O-ring seal and install new as necessary.
    - Lubricate the O-ring seal with clean engine oil.
-